



The FT NavVision DP system combines the unprecedented graphical capabilities of FT NavVision with the field-proven control algorithms of the Imtech world-wide applied DP systems. The FT NavVision DP system is an extreme reliable and versatile ship control system for yachts, workboats, patrol boats, windfarm vessels and other boats operating in safety critical situations. The FT NavVision DP system is based on touch screen operation, providing direct access to all system functions and limiting the number of buttons, switches and meters on the control panels.

The FT NavVision DP system interfaces with a DGPS compass for accurate real-time positioning of the vessel.

### Intuitive operation

The FT NavVision DP system processes and presents the position data in a clear, unambiguous and self explanatory graphic user interface. The high quality marine touch screen combined with the graphic user interface, results in an intuitive operated control system. The marine-grade equipment guarantees a reliable and trouble-free operation. The optional joystick can be used for additional user comfort.

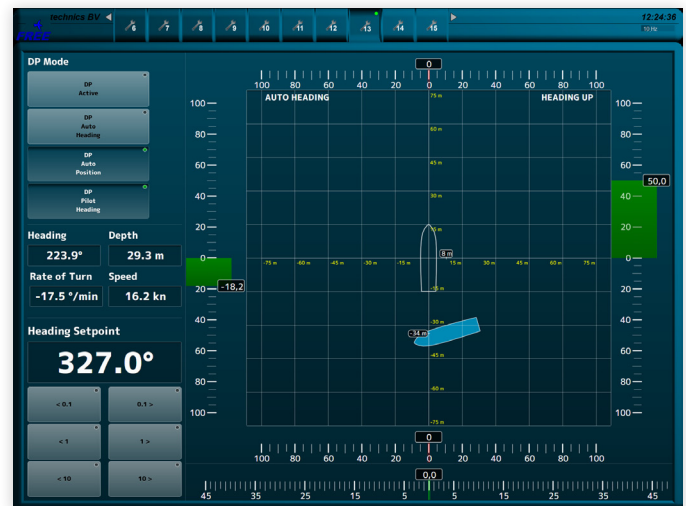
### Position hold

Selecting the position keeping mode ("position hold") will maintain the ship on the present position. The FT NavVision DP system controls the propellers and thrusters to keep the ship on the required position. The hold-position can be moved by a simple drag-and-drop control.

The FT NavVision DP system is designed to minimize fuel consumption and wear and tear on the propulsion equipment. The position hold mode is used for automatic vessel positioning on open sea, for dock maneuvers, holding position at windmills, etcetera. The Adaptive Control Algorithms will guarantee optimal DP performance under changing circumstances.

### Key Features

- Intuitive Graphical User interface
- Adaptive Control Algorithms
- Optional operation via joystick
- Positioning up to 0.01 m./° accurate
- Rapid switching between AP/DP mode
- Drag&Drop vessel positioning



DP Control User Interface



## Scope Of Supply

The scope of supply of the FT NavVision DP system comprises:

- Operator Panel with touch control
- Control Unit
- Optional Joystick
- Optional Thruster Interface Unit
- Documentation

## Propulsion configuration

Two propellers (0-10V)  
Two rudders (0-10V)  
One bow thruster (0-10V)  
One stern thruster (0-10V)

## Navigation sensor

GPS compass (NMEA0183)

## Requirements

The following equipment must allow third-party control & monitoring:

- Proportional bow thruster
- Proportional stern thruster
- Gearbox with trolling functionality
- 1 or 2 engines
- 1 or 2 rudders (hydraulic preferred)

